

HAGLEY PARK TENNIS CLUB

September 2010

FROM THE PRESIDENT



None of us who were in Christchurch will ever forget 4.35am on Saturday, 4 September. To those who may have suffered damage to oneself or property I express my sympathy and that of your committee. We were lucky in that the clubhouse and courts survived unscathed.

May I welcome Janine Tyler, as our new Junior Administrator and wish her well as she prepares the junior teams for their competitions. I wish them and our senior teams the very best for their competitive season.

Members will have noticed the neat and tidy appearance of the club courts and surrounds. This is a credit to David Taylor our new Grounds Manager. I wish to record the great start he has made to what I hope will be a long association with our club.

I am looking forward to a great grass court season which begins on Saturday 2 October . I encourage members to make the most of the wonderful facilities available at our club.

Alex Sutherland
President

Your Committee	
President	Alex Sutherland
Vice President	Jocelyn Douglas
Immediate Past President	David Corlett
Hon Secretary	Rosalie Lau
Club Captain	Bryce Thomson
Junior Administrator	Janine Tyler
Ladies Midweek Captain	Liz Rivers
Hon Treasurer	David Fifield
Committee	Christine Yap, Dafyyd James, Lindsay North

New Grounds Manager Appointed

We are very pleased to have secured the services of David Taylor as our new grounds manager. If you see David down at the club please be sure to introduce yourself. And now some words from David.

Hello all ... Well It's been over a month in my new role as Grounds Manager for the H.T.C ... Week by week I am becoming more familiar with the position. The first season will be a steep learning curve, however by the end of the summer season I'm confident I will be well acquainted with protocol and procedure. With Brains unwavering support and Bills expertise and familiarity with this position and the help of others I'm sure I can reach and continue to maintain the high bench mark set by Bill.



For the past 33years I have been committed to running my business in Landscape Architecture. As a Consultant, Designer and Horticulturist I have a broad base in Horticulture. Having modified my business interests, I now feel I have the best of both worlds as a Consultant and Designer. I now have the time to peruse my ongoing interest in Horticulture, diversifying into turf culture and maintenance. Leading up to the start of the busy summer season of Lawn Tennis I have been enjoying my new change in direction and pace.

I'm sure I will be seeing lots of you all over the coming months. Let's hope we soon get some much needed consistent sunny warm spring weather

Bye for now David

Grass Court Open Day

Bring a friend, and play for free. Feel the grass on Grass Court Open Day at **1pm on the 2nd of October**. We are opening our doors and courts to you and your family come along and give tennis a go! It's free to participate and the event welcomes players of all ages and abilities to experience tennis in a friendly and encouraging environment. Bring your racquet for a hit or just come along to find out more information on club programmes and activities.

Play tennis, Get fit, Have fun!

Junior tennis

After two years of holding the position of Junior Administrator, I have decided to take a break. I have really enjoyed my time organising the juniors and dealing with the parents.

Once again I would like to thank you for your support in the last 2 years. **Janine Tyler** will be the new Junior Administrator. Please contact Janine with any queries on phone 355 5369, Cell: 021 039 5030, E:mail derbystreet@xtra.co.nz.

The junior opening days will be on Saturday 4 and 11 September 2010, from 10am to 12 noon followed by a BBQ on the 4th. Please come down to the Club to register and also for a hit.

Junior inter club tennis will start in the first week of Term 4, being 15-17 October 2010. However we will need to register the teams with Canterbury Tennis in the next few weeks, so please contact Janine if you are keen to play inter club this season and cannot make it to one of the opening days.

I hope to see some if not all of you at the Club at some stage. Hope you all have a good season and keep playing tennis

Christine Yap

Few changes for Junior Interclub for next season

Following the debrief of the 2009/10 season with Club Junior Administrators there are only a few proposed changes for junior interclub next season.

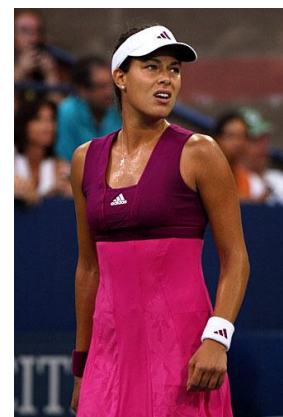
A new 9's grade will be offered on the Friday evening and Saturday morning playing full court with a green ball; also clubs will be permitted to enter mixed senior satellite (16-20 year olds) teams on a Saturday for the first time. These teams will be placed in their own grade or be added to the bottom boys division depending on entries. Challenger finals will be played on a Sunday instead of on the afternoon of all the other Junior Interclub finals and teams that default 3 times in a competition will be automatically withdrawn from the competition.

It was proposed that the Top Dog grading system should be expanded to all grades of junior interclub with the only sticking point being the increased team entry costs required to cover the administration of the increased inputting and set up costs. The proposed increase was to be \$5 per team for the season.

Parents and players should ensure their views on whether Top Dog should be opted for all 61 grades of junior interclub and this small per player increase be accepted via their Club Junior Administrator.

Lost and Found

One red MP3 player found. Please contact Rosie Lau on 351-1134.





Tennis coaching

Another season is upon us and I'm looking forward to seeing new faces and old on court soon.

Team Mentors- This season I am calling for any senior members who would like to have more association with the juniors to mentor an interclub team. Our junior teams will be selected shortly, they play matches depending on age and ability on Friday, Saturday or

Sunday with most teams playing on Saturday. If you are interested in being involved with a team there is NO obligation to be all matches or team practices but you would be welcome to be there at team practice during the week and to watch games. Your input would be to encourage players, maybe hit with team players occasionally and impart the values of good sportsmanship, teamwork and hard work. Anyone interested in this can contact me at the club or at home on 348-6108.

Holiday Program

20-23 September 9:30am-12:00 noon

27-30 September 9:30am-12:00 noon

Cost is \$70 for the week with the reserve day Friday.

Enrolments to Mark Belcher 348 6109 0274 985 353.

Wednesday evening Social Tennis

Opening day for Wednesday evening Social Tennis is the 6th of October. It is our official opening night and its a great introduction for players of all levels and ages so if you know anyone interested in coming spread the word.

Beginner Coaching

If you know anyone who would like to learn how to play tennis Easi-Tennis is a course for beginners which runs for 6 weeks with 1.5 hour sessions and costs \$79.

Thursday Night Group Coaching

Don't forget that you can also join Mark's group lessons on Thursday nights at 7pm. The cost is \$10 per person.

If you have any questions about coaching you can contact Mark on either **348 6108** or **027 498 6363**.

Injuries limiting your tennis?

Visit Russley Physiotherapy & Sports Clinic and you will get \$5 off your initial appointment. No GP referral needed. Phone Michelle North on 358 4878 to make an appointment.



Our very own NZ Radio Awards winner



Calling All Interclub Players

If you want to play senior interclub this year you will need to contact our Club Captain Bryce Thompson as soon as possible.

We are looking at entering a senior men's, senior women's, division 1 men's and division 1 women's, two division 2 women's teams, and two division 3 men's teams.

If you are interested please contact Bryce immediately.

Home 332-3222

Mobile 0274-360-568.

Another Busy Year

Below is an extract from our Year Planner for our tennis club activities over the next two months. You can find the whole year planner and other useful information on our website: hagleyparktennis.co.nz.

September

- 1 Hagley Park mid-week ladies' competition starts
- 4th and 11th Junior opening day, 10am – 12 noon (2nd day)
- 9 Easi-tennis commences. (Thursdays: 5.30 - 7pm for several weeks)
- 20 – 23 Holiday coaching - 9.30 – 12 noon. Contact Mark Belcher (0274 986 363)
- 27 – 30 Holiday coaching - 9.30 – 12 noon. Contact Mark Belcher (0274 986 363)
- 25 Interclub matches start early October (dates to be determined)
Senior men, senior women, Div 1, 2, 4 men & Div 2 women
- 26 Daylight saving starts
- 30 Get in early to get your Senior & Mid Week subs discount

October

- 2 Grass Courts *OPEN DAY* (free tennis) Saturday 1pm - 4pm.
- 6 Social tennis commences. Wednesdays: 6pm - 8pm
- 15 Junior social tennis and BBQ nights start Fridays: 4.30pm - 6.00pm
- 15 Parents' (of junior interclub players) meeting, 5.30pm at clubhouse
- 16 Saturday morning coaching starts:
 - 9 to 10am: Beginners and under 10s
 - 10 to 11am: Intermediate & 10s and over
- 15/16, 17 Junior interclub matches start

Attached to this newsletter is your subscription renewal notice for the coming year. If your membership category has changed - particularly from any of the age-related categories, or if you wish to change from Mid Week to Senior to enable you to play interclub, please advise our Treasurer, David Fifield. And don't forget – pay early (by 30 September) to receive your discount!

